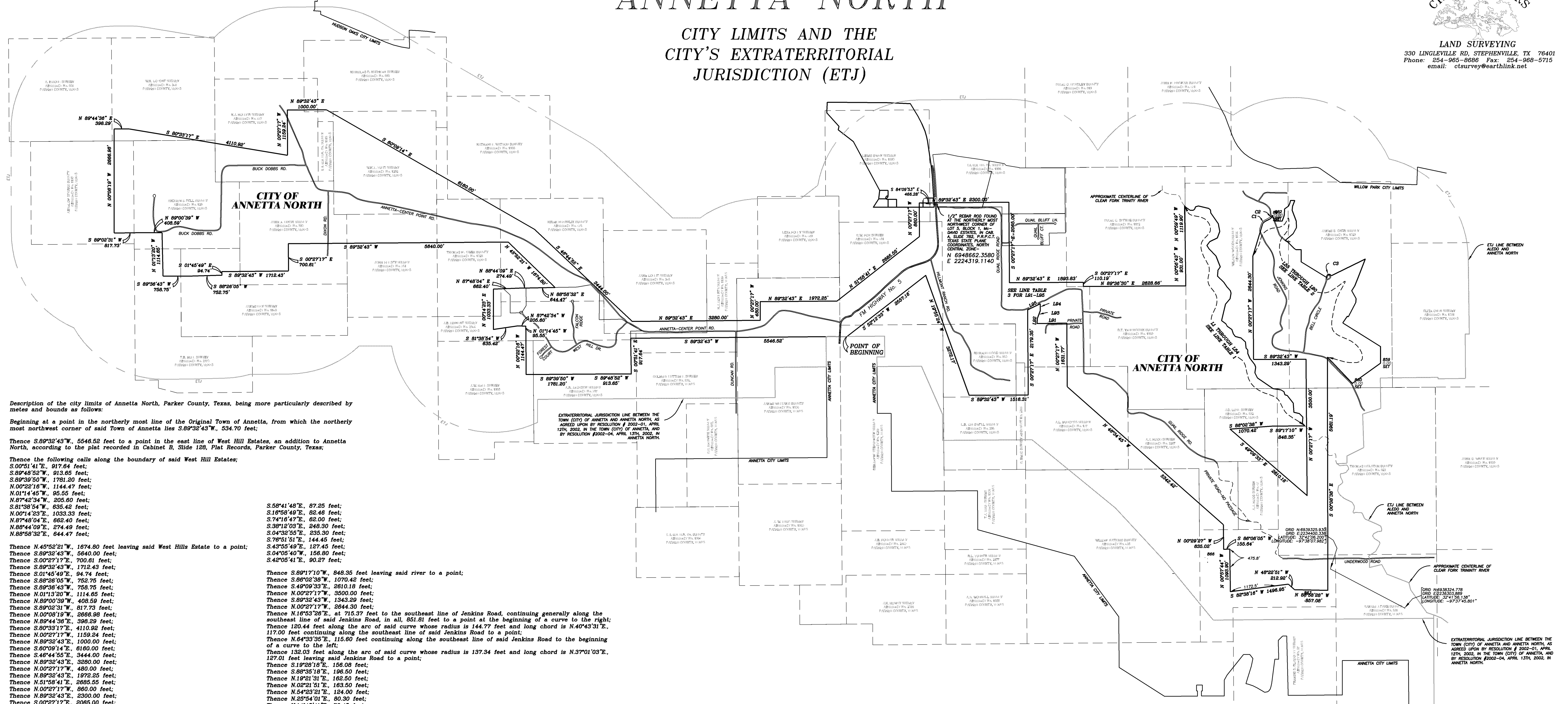


ANNETTA NORTH

CITY LIMITS AND THE CITY'S EXTRATERRITORIAL JURISDICTION (ETJ)



LAND SURVEYING
330 LINGLEVILLE RD, STEPHENVILLE, TX 76401
Phone: 254-965-8888 Fax: 254-968-5715
email: ctsurvey@earthlink.net



Description of the city limits of Annetta North, Parker County, Texas, being more particularly described by metes and bounds as follows:

Beginning at a point in the northerly most line of the Original Town of Annetta, from which the northerly most northwest corner of said Town of Annetta lies S.89°32'43"W, 534.70 feet;

Thence S.89°32'43"W, 5546.52 feet to a point in the east line of West Hill Estates, an addition to Annetta North, according to the plat recorded in Cabinet B, Slide 128, Plat Records, Parker County, Texas;

Thence the following calls along the boundary of said West Hill Estates:
S.00°51'41"E, 917.64 feet;
S.89°48'52"W, 913.65 feet;
S.89°39'50"W, 1781.20 feet;
N.00°22'17"W, 1144.47 feet;
N.01°14'45"W, 95.55 feet;
N.87°42'34"W, 205.60 feet;
S.81°30'54"W, 635.42 feet;
N.00°14'23"E, 1033.33 feet;
N.87°48'04"E, 682.40 feet;
N.88°44'09"E, 274.49 feet;
N.89°50'32"E, 644.47 feet;

Thence N.45°52'21"W, 1674.80 feet leaving said West Hill Estates to a point;
Thence S.89°32'43"W, 5540.00 feet;
Thence S.00°27'17"W, 700.61 feet;
Thence S.89°32'43"W, 1712.43 feet;
Thence S.01°45'49"E, 94.74 feet;
Thence S.89°28'05"W, 752.75 feet;
Thence S.89°36'43"W, 752.75 feet;
Thence N.01°13'20"W, 1114.65 feet;
Thence N.89°00'39"W, 408.59 feet;
Thence S.89°02'31"W, 817.73 feet;
Thence N.00°09'19"W, 2686.98 feet;
Thence N.89°44'38"E, 398.29 feet;
Thence S.80°33'17"E, 4110.92 feet;
Thence N.00°27'17"W, 1159.24 feet;
Thence N.89°32'43"E, 1000.00 feet;
Thence S.80°09'14"E, 6160.00 feet;
Thence S.48°44'55"E, 3444.00 feet;
Thence N.89°32'43"E, 3280.00 feet;
Thence N.00°27'17"W, 480.00 feet;
Thence N.89°32'43"E, 1972.25 feet;
Thence N.51°58'41"E, 2685.55 feet;
Thence N.00°27'17"W, 860.00 feet;
Thence N.89°32'43"E, 2300.00 feet;
Thence S.00°27'17"E, 2065.00 feet;
Thence N.89°32'43"E, 1893.93 feet;
Thence S.00°27'17"E, 110.19 feet;
Thence N.89°36'30"E, 2828.66 feet;
Thence N.00°58'43"W, 931.00 feet;
Thence N.00°59'49"W, 1119.90 feet to a point in Clear Fork Trinity River;

Thence the following calls along the approximate centerline of the Clear Fork Trinity River:

S.41°39'42"E, 51.74 feet;
S.58°48'21"E, 130.86 feet;
S.83°55'20"E, 74.66 feet;
N.51°45'43"E, 48.45 feet;
N.28°21'02"E, 72.56 feet;
N.72°44'29"E, 74.38 feet;
S.79°44'59"E, 270.10 feet;
S.40°41'41"E, 62.22 feet;
S.06°40'23"E, 76.97 feet;
S.34°38'47"E, 338.63 feet;
S.09°51'23"E, 201.33 feet;
S.19°50'53"E, 173.98 feet;
S.64°26'40"W, 214.98 feet;
S.36°57'12"W, 128.88 feet;
S.39°29'17"E, 103.21 feet;
S.43°49'04"E, 890.56 feet;
S.21°19'55"E, 206.15 feet;
S.53°38'34"W, 103.10 feet;
S.04°52'16"W, 153.71 feet;
S.48°19'57"E, 217.06 feet;
S.33°58'08"E, 144.11 feet;
S.41°29'07"E, 139.73 feet;
S.14°44'44"E, 63.26 feet;
S.09°58'01"W, 142.81 feet;
S.40°21'03"W, 71.80 feet;
S.41°08'48"W, 110.41 feet;
S.19°00'40"W, 436.03 feet;
S.53°34'12"E, 132.84 feet;
S.28°41'12"E, 79.83 feet;
S.56°40'12"E, 140.00 feet;
S.19°05'12"E, 120.68 feet;
S.37°47'12"E, 82.43 feet;
S.74°34'12"E, 149.48 feet;
S.47°12'12"E, 154.55 feet;
S.47°10'12"E, 268.89 feet;
S.06°25'09"E, 158.75 feet;
S.39°59'29"E, 63.90 feet;
S.04°14'07"E, 93.70 feet;
S.23°08'07"E, 125.95 feet;
S.37°22'38"E, 204.70 feet;
S.29°34'13"E, 73.04 feet;
S.09°29'21"W, 145.05 feet;
S.27°10'16"E, 151.09 feet;
S.55°32'01"E, 481.00 feet;
S.80°50'37"E, 208.00 feet;

S.58°41'49"E, 87.25 feet;
S.16°58'49"E, 82.46 feet;
S.74°16'47"E, 82.00 feet;
S.39°12'03"E, 248.30 feet;
S.04°32'55"E, 235.30 feet;
S.78°51'51"E, 144.45 feet;
S.43°55'49"E, 127.45 feet;
S.04°05'40"W, 166.80 feet;
S.48°05'41"E, 90.27 feet;

Thence S.89°17'10"W, 948.35 feet leaving said river to a point;
Thence S.89°02'38"W, 1070.42 feet;
Thence S.49°09'33"E, 2610.18 feet;
Thence N.00°27'17"W, 3500.00 feet;
Thence S.89°32'43"W, 1943.29 feet;
Thence N.00°27'17"E, 2844.50 feet;
Thence N.16°53'28"E, at 715.37 feet to the southeast line of Jenkins Road, continuing generally along the southeast line of said Jenkins Road, in all, 851.81 feet to a point at the beginning of a curve to the right;
Thence 120.44 feet along the arc of said curve whose radius is 144.77 feet and long chord is N.40°43'31"E, 117.00 feet continuing along the southeast line of said Jenkins Road to a point;
Thence N.84°33'35"E, 115.60 feet continuing along the southeast line of said Jenkins Road to the beginning of a curve to the left;
Thence 132.03 feet along the arc of said curve whose radius is 137.34 feet and long chord is N.37°01'03"E, 127.01 feet leaving said Jenkins Road to a point;
Thence S.19°29'18"E, 156.08 feet;
Thence S.89°35'18"E, 196.50 feet;
Thence N.19°21'31"E, 182.50 feet;
Thence N.02°21'51"E, 163.50 feet;
Thence N.54°23'21"E, 184.00 feet;
Thence N.29°54'01"E, 80.30 feet;
Thence N.14°45'41"E, 70.45 feet;
Thence N.89°30'31"E, 108.99 feet;
Thence S.82°14'54"W, 152.47 feet;
Thence S.08°04'55"E, 106.35 feet;
Thence S.20°54'52"E, 292.42 feet;
Thence S.03°27'24"E, 188.58 feet;
Thence S.29°24'16"W, 101.93 feet;
Thence S.48°59'45"W, 381.04 feet;
Thence S.53°12'16"E, 89.44 feet;
Thence S.45°13'56"E, 228.24 feet;
Thence S.58°30'46"E, 41.21 feet;
Thence S.89°06'11"E, 139.78 feet;
Thence S.01°01'14"W, 311.87 feet;
Thence S.58°28'23"E, 785.01 feet to a point in a curve concave to the southeast;
Thence 201.70 feet along the arc of said curve whose radius is 80.41 feet and long chord is N.6°00'03"E, 120.22 feet along a cut de sac at the end of Bell Circle;
Thence N.83°58'21"E, 971.00 feet;
Thence S.21°13'21"W, 475.32 feet;
Thence S.19°15'51"E, 591.18 feet;
Thence S.22°09'36"W, 205.00 feet;
Thence S.32°19'36"W, 147.30 feet to a corner of West Oaks Homesites, Section 2, an addition to Parker County, according to the plat recorded in Cabinet A, Slide 212, Plat Records, Parker County, Texas;
Thence S.29°59'52"E, 230.80 feet along the boundary of said West Oaks Homesites, Section 2, to a point;
Thence S.08°15'58"W, 101.24 feet to a point on the boundary of said West Oaks Homesites, Section 2;

Thence the following calls along the boundary of said West Oaks Homesites, Section 2:
S.27°27'08"W, 413.93 feet;
N.62°24'10"W, 30.11 feet;
S.34°57'35"W, 208.57 feet;
S.57°57'13"E, 1148.28 feet;
S.00°20'24"E, 423.22 feet;

Thence S.54°27'15"W, 890.25 feet leaving the boundary of said West Oaks Homesites, Section 2 to the northeast line of Jenkins Road;
Thence N.43°38'16"W, 931.81 feet along the northeast line of said Jenkins Road to a point;
Thence S.00°08'38"E, 5981.10 feet leaving the northeast line of said Jenkins Road to a point;
Thence N.88°58'28"W, 857.08 feet;
Thence N.48°22'31"W, 212.92 feet;
Thence S.89°38'16"W, 1498.85 feet;
Thence N.00°57'44"W, 1093.90 feet;
Thence S.88°08'05"W, 155.84 feet;
Thence N.00°29'27"W, 635.02 feet;
Thence N.49°34'45"E, 5345.42 feet;
Thence N.00°27'17"W, 1631.77 feet;
Thence S.89°04'21"W, 780.25 feet;
Thence N.02°39'39"E, 134.30 feet;
Thence N.20°59'59"E, 214.20 feet;
Thence N.00°38'49"W, 174.33 feet to the south line of Quail Ridge Road;
Thence S.63°50'21"W, 358.81 feet along the south line of said Quail Ridge Road to a point;
Thence S.00°27'17"E, 219.35 feet leaving the south line of said Quail Ridge Road to a point;
Thence S.89°32'43"W, 1516.31 feet;
Thence N.19°55'24"W, 3272.17 feet;
Thence S.52°12'33"W, 2557.16 feet to the point of beginning and containing 2116.10 acres, more or less

LINE	LENGTH	BEARING
L1	51.74	S41°39'42"E
L2	130.86	S58°48'21"E
L3	74.66	S83°55'20"E
L4	48.45	N51°45'43"E
L5	72.56	N28°21'02"E
L6	74.38	N72°44'29"E
L7	270.10	S79°44'59"E
L8	62.22	S40°41'41"E
L9	76.97	S06°40'23"E
L10	338.63	S34°38'47"E
L11	201.33	S09°51'23"E
L12	173.98	S19°50'53"E
L13	814.99	S64°26'40"W
L14	108.88	S36°57'12"E
L15	100.21	S39°29'17"E
L16	890.56	S43°49'04"E
L17	206.15	S21°19'55"E
L18	103.10	S53°38'34"W
L19	153.71	S04°52'16"W
L20	217.06	S48°19'57"E
L21	144.11	S33°58'08"E
L22	139.73	S41°29'07"E
L23	63.26	S09°58'01"W
L24	142.81	S40°21'03"W
L25	71.80	S41°08'48"W
L26	110.41	S19°00'40"W
L27	436.03	S53°34'12"E
L28	79.83	S28°41'12"E
L29	140.00	S56°40'12"E
L30	120.68	S19°05'12"E
L31	82.43	S37°47'12"E
L32	149.48	S74°34'12"E
L33	154.55	S47°12'12"E
L34	268.89	S47°10'12"E
L35	158.75	S06°25'09"E
L36	63.90	S39°59'29"E
L37	93.70	S04°14'07"E
L38	125.95	S23°08'07"E
L39	204.70	S37°22'38"E
L40	73.04	S29°34'13"E
L41	145.05	S09°29'21"W
L42	151.09	S27°10'16"E
L43	481.00	S55°32'01"E
L44	208.00	S80°50'37"E
L45	62.00	S74°34'12"E
L46	848.30	S89°17'10"W
L47	1070.42	S89°02'38"W
L48	2610.18	S49°09'33"E
L49	3500.00	N00°27'17"W
L50	1943.29	S89°32'43"W
L51	2844.50	N00°27'17"E
L52	115.60	N84°33'35"E
L53	163.50	N02°21'51"E
L54	184.00	N54°23'21"E
L55	80.30	N29°54'01"E
L56	70.45	N14°45'41"E
L57	108.99	N89°30'31"E
L58	152.47	S82°14'54"W
L59	106.35	S08°04'55"E
L60	292.42	S20°54'52"E
L61	188.58	S03°27'24"E
L62	101.93	S29°24'16"W
L63	381.04	S48°59'45"W
L64	89.44	S53°12'16"E
L65	228.24	S45°13'56"E
L66	41.21	S58°30'46"E
L67	139.78	S89°06'11"E
L68	311.87	S01°01'14"W
L69	785.01	S58°28'23"E
L70	971.00	N83°58'21"E
L71	475.32	S21°13'21"W
L72	591.18	S19°15'51"E
L73	205.00	S22°09'36"W
L74	147.30	S32°19'36"W
L75	230.80	S29°59'52"E
L76	101.24	S08°15'58"W
L77	30.11	S62°24'10"W
L78	208.57	S34°57'35"W
L79	1148.28	S57°57'13"E
L80	423.22	S00°20'24"E
L81	890.25	S54°27'15"W
L82	931.81	N43°38'16"W
L83	5981.10	S00°08'38"E
L84	857.08	N88°58'28"W
L85	212.92	N48°22'31"W
L86	1498.85	S89°38'16"W
L87	1093.90	N00°57'44"W
L88	155.84	S88°08'05"W
L89	635.02	N00°29'27"W
L90	5345.42	N49°34'45"E
L91	1631.77	N00°27'17"W
L92	780.25	S89°04'21"W
L93	134.30	N02°39'39"E
L94	214.20	N20°59'59"E
L95	174.33	N00°38'49"W
L96	358.81	S63°50'21"W
L97	219.35	S00°27'17"E
L98	1516.31	S89°32'43"W
L99	3272.17	N19°55'24"W
L100	2557.16	S52°12'33"W

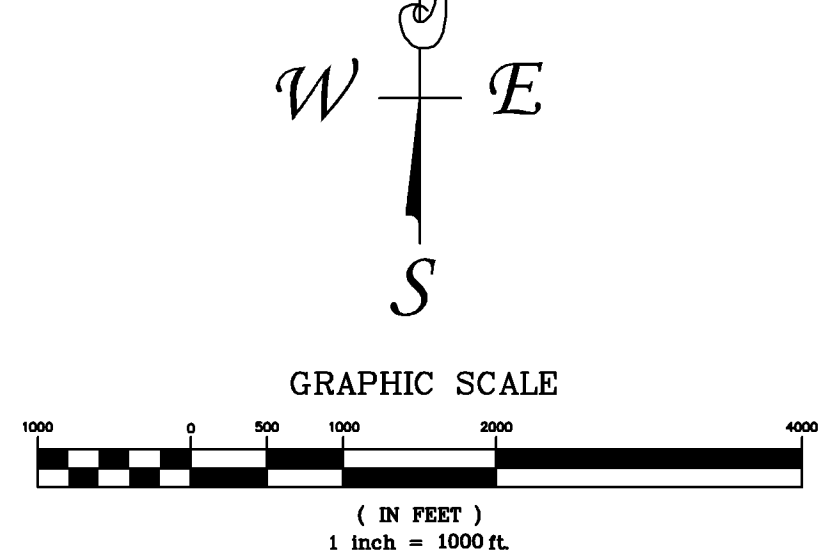
LINE	LENGTH	BEARING
L51	851.81	N89°32'43"E
L52	156.08	S19°29'18"E
L53	196.50	S89°35'18"E
L54	182.50	N19°21'31"E
L55	163.50	N02°21'51"E
L56	184.00	N54°23'21"E
L57	80.30	N29°54'01"E
L58	70.45	N14°45'41"E
L59	108.99	N89°30'31"E
L60	152.47	S82°14'54"W
L61	106.35	S08°04'55"E
L62	292.42	S20°54'52"E
L63	188.58	S03°27'24"E
L64	101.93	S29°24'16"W
L65	381.04	S48°59'45"W
L66	89.44	S53°12'16"E
L67	228.24	S45°13'56"E
L68	41.21	S58°30'46"E
L69	139.78	S89°06'11"E
L70	311.87	S01°01'14"W
L71	785.01	S58°28'23"E
L72	971.00	N83°58'21"E
L73	475.32	S21°13'21"W
L74	591.18	S19°15'51"E
L75	205.00	S22°09'36"W
L76	147.30	S32°19'36"W
L77	230.80	S29°59'52"E
L78	101.24	S08°15'58"W
L79	30.11	S62°24'10"W
L80	208.57	S34°57'35"W
L81	1148.28	S57°57'13"E
L82	423.22	S00°20'24"E
L83	890.25	S54°27'15"W
L84	931.81	N43°38'16"W

CURVE	LENGTH	RADIUS	BEARING	CHORD DISTANCE
C1	180.44	144.77	N40°43'31"E	117.00
C2	132.03	137.34	N37°01'03"E	127.01
C3	801.70	60.41	N6°00'03"E	120.22

LINE	LENGTH	BEARING
L91	760.25	S89°04'21"W
L92	134.30	N02°39'39"E
L93	158.80	N20°59'59"E
L94	174.33	N00°38'49"W
L95	358.81	S63°50'21"W

APPROVED BY THE PARKER COUNTY COMMISSIONERS

PLAT APPROVED DATE _____
BY: _____ COUNTY JUDGE
BY: _____
BY: _____
BY: _____
BY: _____



CITY OF ANNETTA NORTH, TEXAS
CITY PLAN COMMISSION
MAP APPROVED DATE _____
BY: _____ MAYOR
BY: _____ CITY SECRETARY

NOTES:
Coordinates shown are Texas State Plane Coordinate System, North Central Zone.
Bearings shown are Texas State Plane Coordinate System, Grid Bearings, North Central Zone.
Distances shown are ground distances.
Annexation locations were determined by GPS observations on a minimum of two corners of the annexed properties.
Original land grants were located on this map by plotting the original field notes recorded at the General Land Office of the State of Texas. In some cases there were overlaps in the field notes for these abstracts, but in most cases they fit together. These abstracts are shown for informational purposes and were not surveyed on the ground.
This document was prepared under 22 TAC 683.21, and does not reflect the results of an on the ground survey, and is not to be used to convey or establish interests in real property except those rights and interests implied or established by the creation or reconfiguration of the boundary of the political subdivision for which it was prepared.

I, Connor Stevens, Texas R.P.L.S. No. 1983, do hereby certify that this map shows the City Limits of the City of Annetta North, Texas. These City Limits Coordinates have been added to all others in accuracy locating these lines on the ground. This map was compiled from record information and some field work as requested by the City of Annetta North.